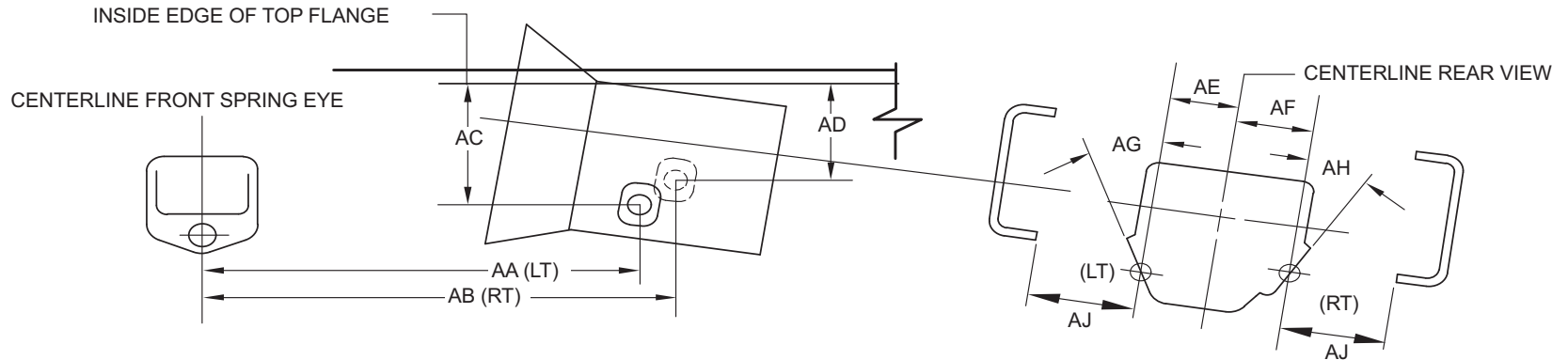


TRANSMISSION

ALL MODELS

Transmission PTO Data

NOTE: Do not reuse PTO cover plate gaskets



13-0004

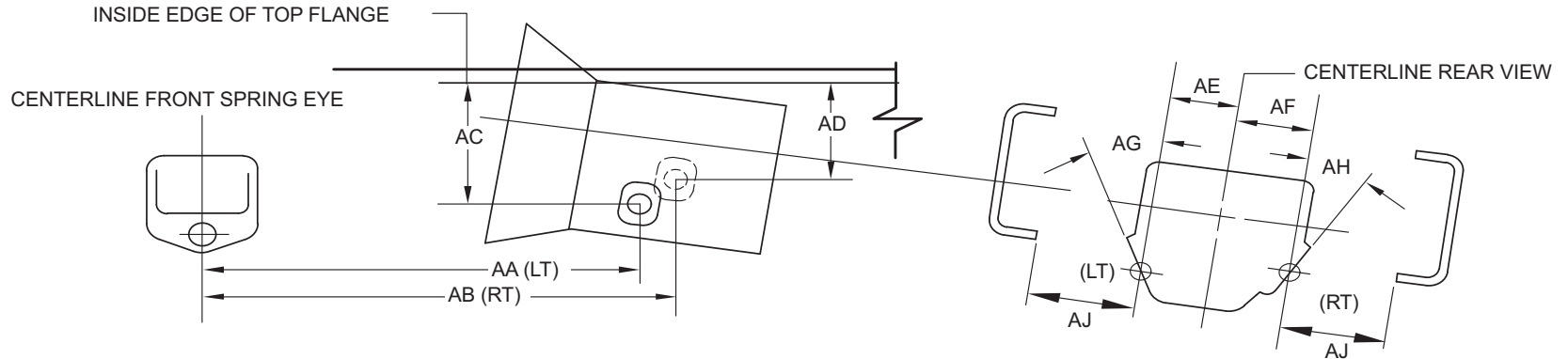
Transmission	Engine	Clearance Provided for SAE Envelope		Left PTO Location				Right PTO Location				
		Left PTO	Right PTO	AA	AC	AE	AG	AB	AD	AF	AH	AJ
13AKY – Allison 5-Speed Automatic, 1000_EVS 13AKX – Allison 5-Speed Automatic, 1000_RDS On/Off Hwy	MaxxForce® 7	A	A	N/A	N/A	N/A	N/A	1569.9	205.17	144.0	0°	211.6
13AHU – Allison 5-Speed Automatic 2100_EVS 13AHP – Allison 5-Speed Automatic 2100_RDS On/Off Hwy 13ALU – Allison 5-Speed Automatic 2200_EVS 13ALW – Allison 5-Speed Automatic 2200_RDS On/Off Hwy 13ALV – Allison 5-Speed Automatic 2500_EVS 13ALX – Allison 5-Speed Automatic 2500_RDS On/Off Hwy 13ALY – Allison 5-Speed Automatic 2500_RDS Refuse	MaxxForce® 7/DT	A	A	N/A	N/A	N/A	N/A	1569.9	205.17	144.0	0°	211.6
13AMY – Allison 5-Speed Automatic 2550_EVS 13AMX – Allison 5-Speed Automatic 2550_RDS On/Off Hwy	MaxxForce® 7/DT					144	0			144	0	

A = SAE Type 1 (6-Bolt) B = SAE Type 2 (8-Bolt) C = Not Qualified

ALL MODELS

Transmission PTO Data (Continued)

NOTE: Do not reuse PTO cover plate gaskets



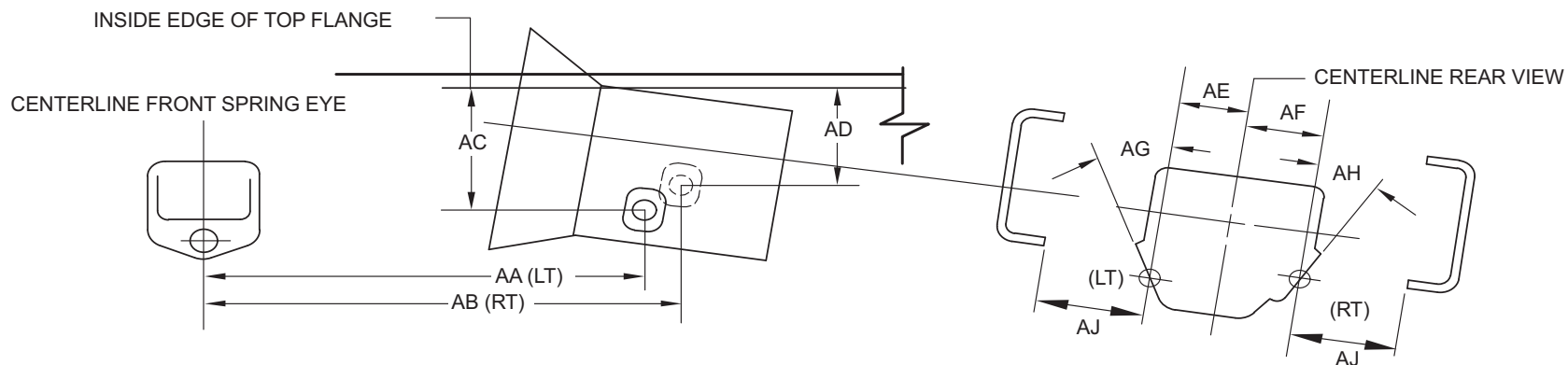
13-0004

Transmission	Engine	Clearance Provided for SAE Envelope		Left PTO Location				Right PTO Location				
		Left PTO	Right PTO	AA	AC	AE	AG	AB	AD	AF	AH	AJ
13AJV – Allison 5-Speed Automatic, 3000_EVS 13AKB – Allison 5-Speed Automatic, 3000_TRV 13ALZ – Allison 5-Speed Automatic, 3000_RDS On/Off Hwy 13AMA – Allison 5-Speed Automatic, 3000_RDS Refuse/Mixer 13AJX – Allison 5-Speed Automatic, 3500_EVS 13AJK – Allison 5-Speed Automatic, 3500_RDS On/Off Hwy 13AJL – Allison 5-Speed Automatic, 3500_RDS Refuse/Mixer	MaxxForce® 7/DT/9	C	C	1426.3	215.25	133.9	8.0°	1426.3	211.75	134.4	6.3°	221.4
13ANV – Allison 6-Speed Automatic 2100_RDS On/Off Hwy 13ANU – Allison 6-Speed Automatic, 2200_EVS 13ANW – Allison 6-Speed Automatic, 2500_RDS	MaxxForce® 7/DT					144	0			144	0	

ALL MODELS

Transmission PTO Data (Continued)

NOTE: Do not reuse PTO cover plate gaskets



13-0004

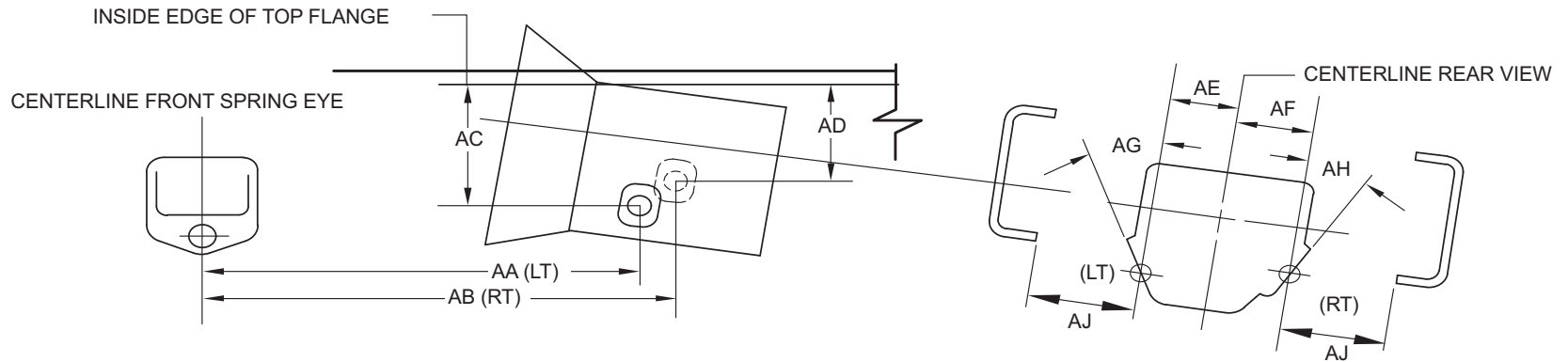
Transmission	Engine	Clearance Provided for SAE Envelope		Left PTO Location				Right PTO Location				
		Left PTO	Right PTO	AA	AC	AE	AG	AB	AD	AF	AH	AJ
13AJU – Allison 6-Speed Automatic, 3000_EVS 13AKA – Allison 6-Speed Automatic, 3000_TRV 13AMB – Allison 6-Speed Automatic, 3000_RDS On/Off Hwy 13AMC – Allison 6-Speed Automatic, 3000_RDS Refuse/Mixer 13AJW – Allison 6-Speed Automatic, 3500_EVS 13AJN – Allison 6-Speed Automatic, 3500_RDS On/Off Hwy 13AJP – Allison 6-Speed Automatic, 3500_RDS Refuse/Mixer	MaxxForce® DT/9	C	C	1426.3	215.25	133.9	8.0°	1426.3	211.75	134.4	6.3°	221.4

A = SAE Type 1 (6-Bolt) B = SAE Type 2 (8-Bolt) C = Not Qualified

ALL MODELS

Transmission PTO Data (Continued)

NOTE: Do not reuse PTO cover plate gaskets



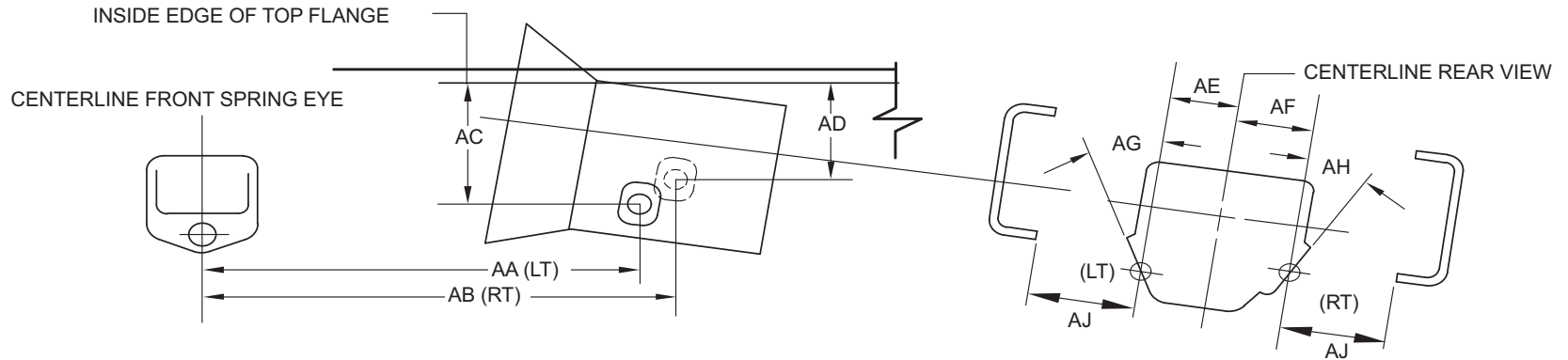
13-0004

Transmission	Engine	Clearance Provided for SAE Envelope		Left PTO Location				Right PTO Location				
		Left PTO	Right PTO	AA	AC	AE	AG	AB	AD	AF	AH	AJ
13AHE – Allison 5-Speed Automatic, 1000_HS 13AHG – Allison 5-Speed Automatic, 2100_HS 13ALR – Allison 5-Speed Automatic, 2200_HS 13ALS – Allison 5-Speed Automatic, 2500_HS 13AMW – Allison 5-Speed Automatic, 2550_HS 13AHZ – Allison 5-Speed Automatic, 3000_HS	MaxxFORCE® 7/DT/9	No PTO Provision										
13ANS - Allison 6-Speed Automatic, 2100_HS 13ANT - Allison 6-Speed Automatic, 2500_HS 13AJA – Allison 6-Speed Automatic, 3000_HS	MaxxFORCE® 7/DT/9											

ALL MODELS

Transmission PTO Data (Continued)

NOTE: Do not reuse PTO cover plate gaskets



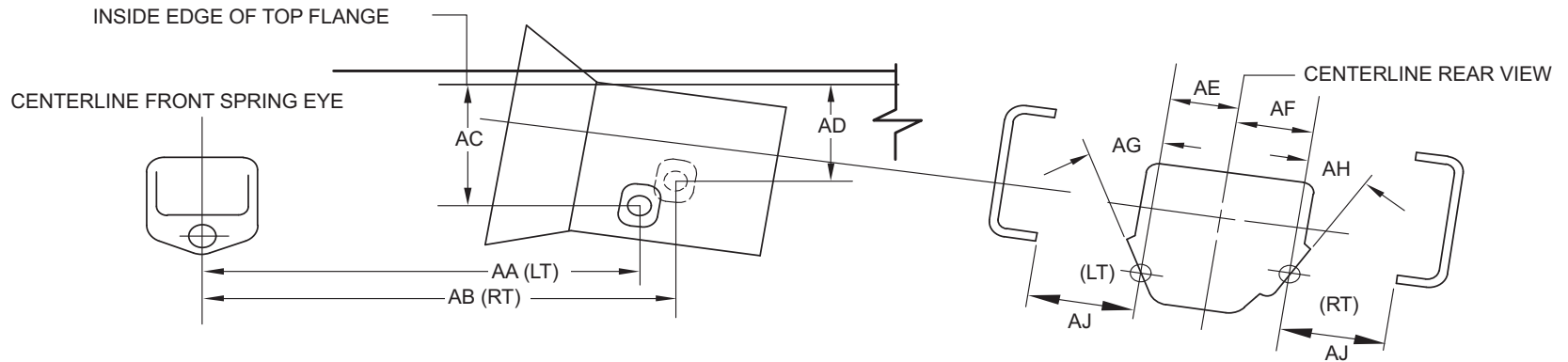
13-0004

Transmission	Engine	Clearance Provided for SAE Envelope		Left PTO Location				Right PTO Location				
		Left PTO	Right PTO	AA	AC	AE	AG	AB	AD	AF	AH	AJ
13GRS – Eaton Fuller 5-Speed Manual, F_5405B 13GRZ – Eaton Fuller 5-Speed Manual, F_6405B-DM3	MaxxForce® DT	A	A	1554.2	387.8	102.6	20.0°	1554.2	387.8	102.6	20.0°	253.8
13GSL -- Eaton Fuller 5-Speed Manual, F_5505B-DM3 13GSN – Eaton Fuller 5-Speed Manual, F_6505B-DM3	MaxxForce® DT					108.9	20			108.9	20	
13GNG – Fuller 6-Speed Manual, FS_5406N 13GMS – Fuller 6-Speed Manual, FS_6406N	MaxxForce® 7/DT	A	A	1331	384.4	102.5	20.3°	1331	384.6	102.9	20.3°	253.5
13GMJ – Fuller 6-Speed Manual, FWO_8406A	MaxxForce® DT/9	A	A	1554.2	387.8	102.9	20.3°	1554.2	387.8	102.9	20.3°	253.5
13GSM – Eaton Fuller 6-Speed Manual, FO_5506B-DM3 13GSP -- Eaton Fuller 6-Speed Manual, FO_6506B-DM3	MaxxForce® DT					108.9	20			108.9	20	
13GRT – Eaton Fuller 6-Speed Manual, FO_5406B-DM3 13GSA – Eaton Fuller 6-Speed Manual, FO_6406B-DM3	MaxxForce® DT	A	A	1554.2	387.8	102.6	20.0°	1554.2	387.8	102.6	20.0°	253.8

ALL MODELS

Transmission PTO Data (Continued)

NOTE: Do not reuse PTO cover plate gaskets



13-0004

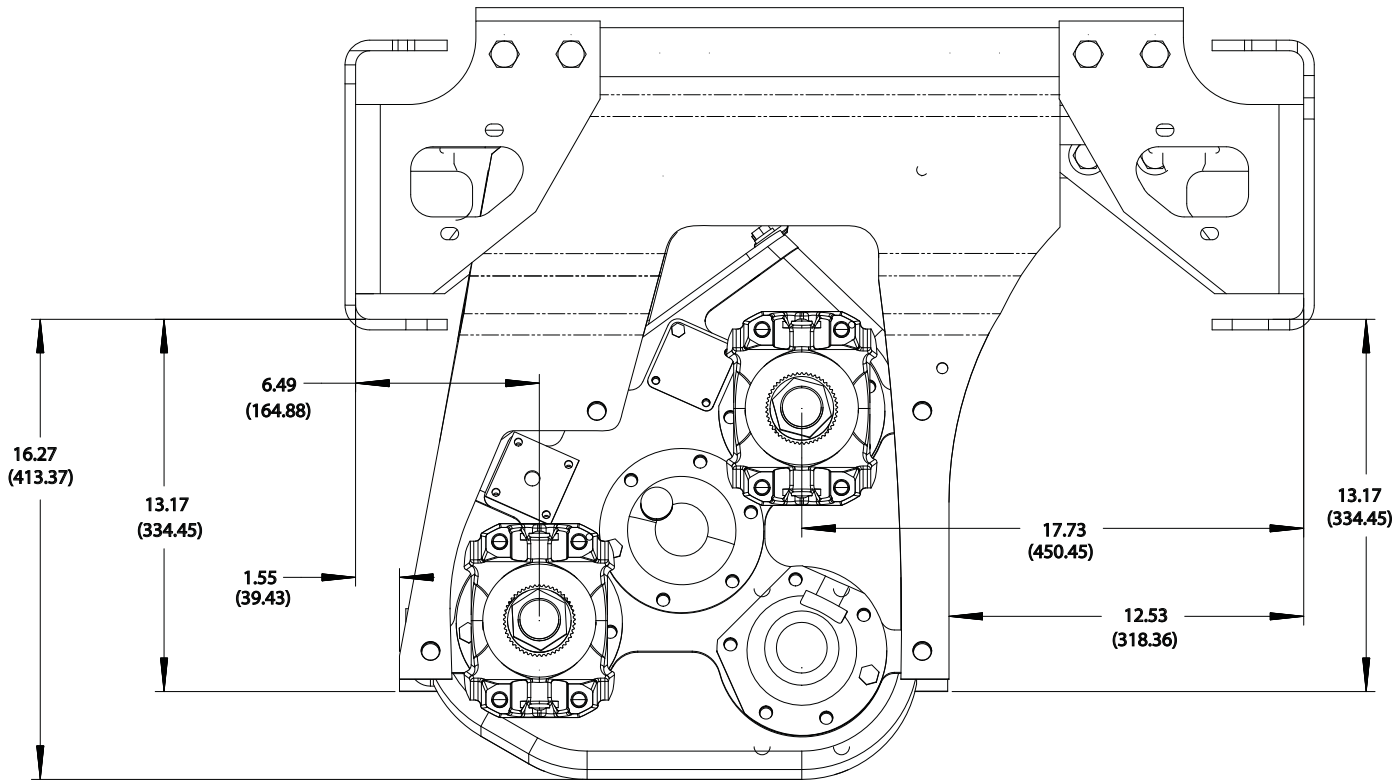
Transmission	Engine	Clearance Provided For SAE Envelope		Left PTO Location				Right PTO Location				
		Left PTO	Right PTO	AA	AC	AE	AG	AB	AD	AF	AH	AJ
13DBG – Spicer 7-Speed Manual, PS110-7B	MaxxForce® DT/9	A	A	1572.1	340.9	169.4	90.0°	1506	256	207.1	57.1°	216.4
13MCG – International 7-Speed Manual, ES066-7B	MaxxForce® DT	A	A	1604.1	375.1	91.3	25.4°	1604.1	375.1	91.3	25.4°	265.2
13MCH – TCC 7-Speed Manual, ESS56-7B	MaxxForce® DT	A	A	1604.1	375.1	91.3	25.4°	1604.1	375.1	91.3	25.4°	265.2
13GJT – Fuller 10-Speed Manual, FR-9210B 13GGK – Fuller 10-Speed Manual, FR-11210B 13GGM – Fuller 10-Speed Manual, FRO-11210C	MaxxForce® DT/9	B	A	1499	369.6	140	90.0°	1506	256	207.1	57.1°	216.4
13GUE -- Eaton Fuller 6-Speed Hybrid, EH-8E406A-UP 13GUG -- Eaton Fuller 6-Speed Hybrid, EH-8E406A-UPG	MaxxForce® DT					108.9	20			108.9	20	

A = SAE Type 1 (6-Bolt) B = SAE Type 2 (8-Bolt) C = Not Qualified

MODEL 4x4

Transfer Case

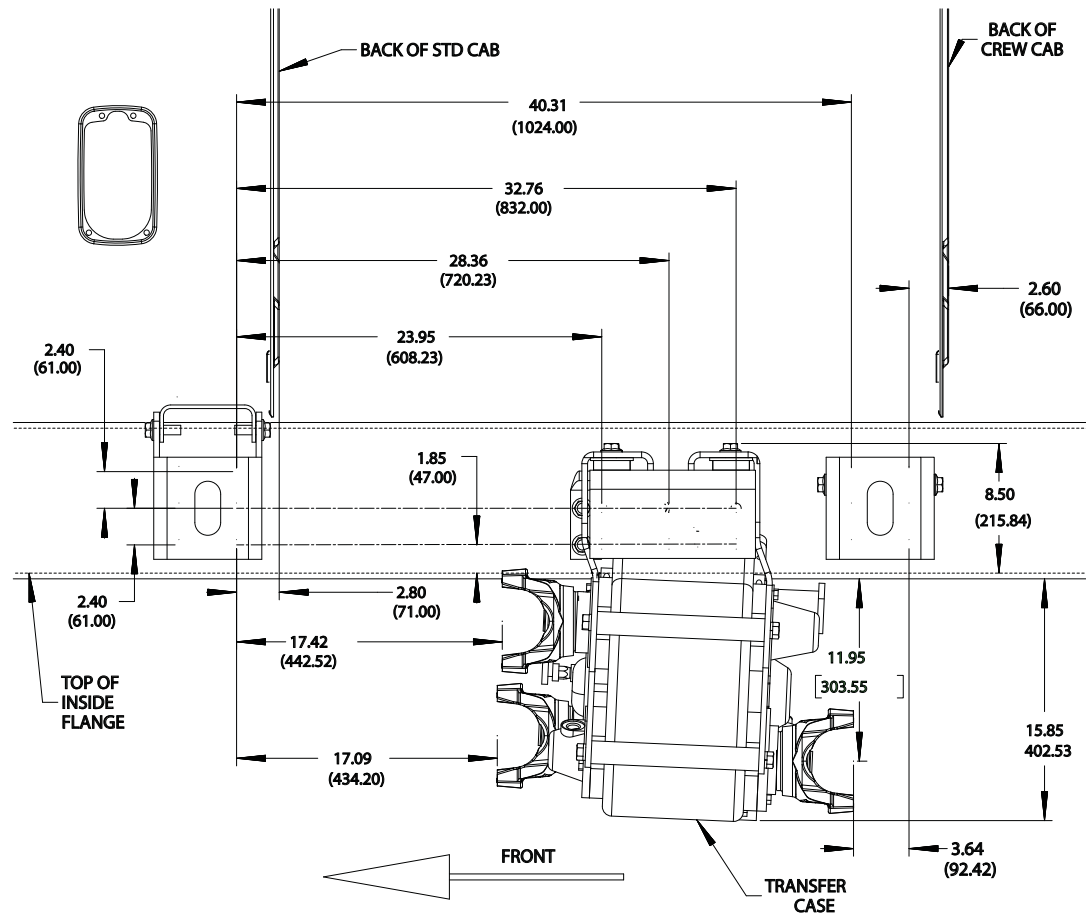
Front View — Code 13TKH



MODEL 4x4

Transfer Case

Side View – Code 13TKH



MODEL 4x4

Transfer Case

Top View – Code 13TKH

