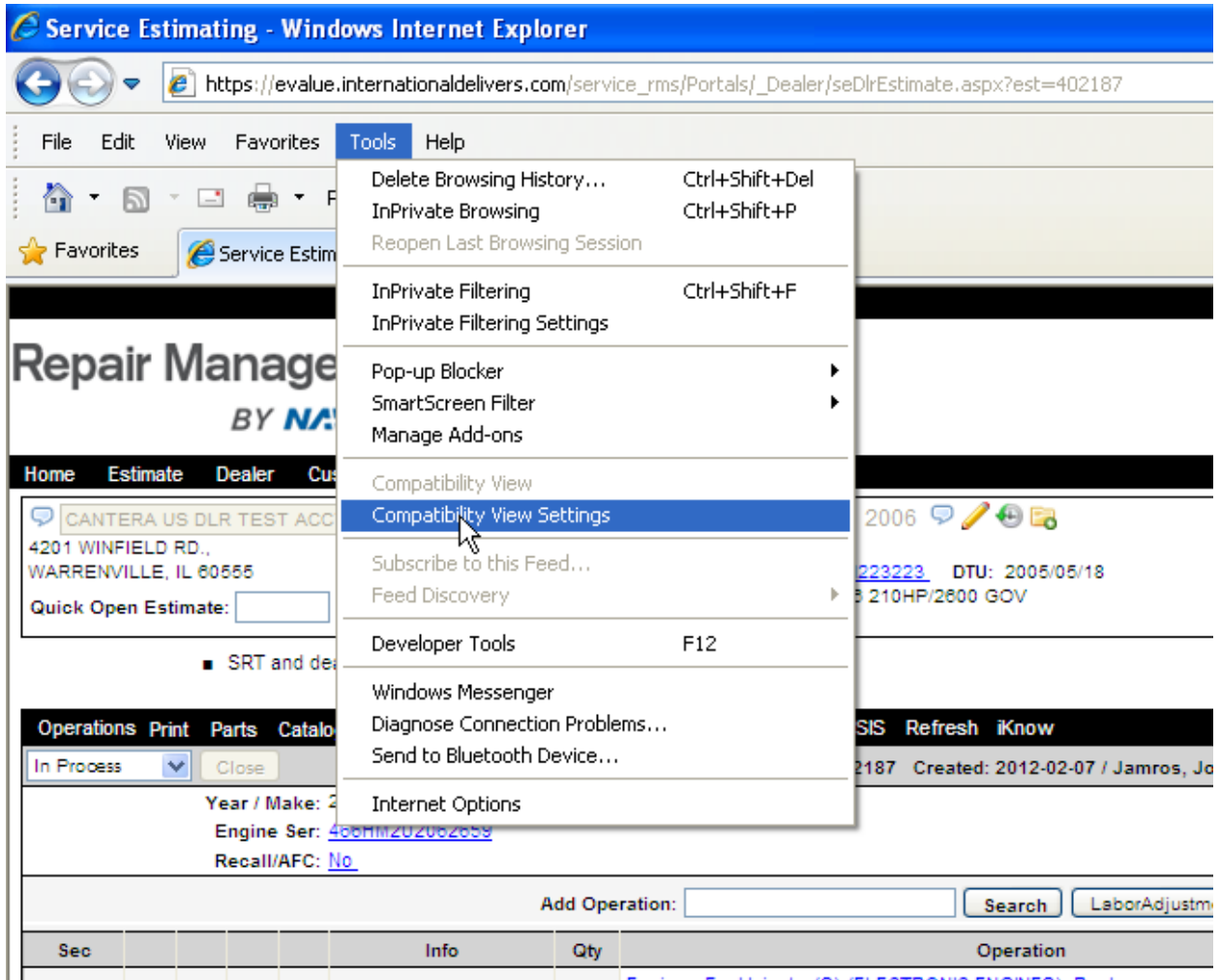
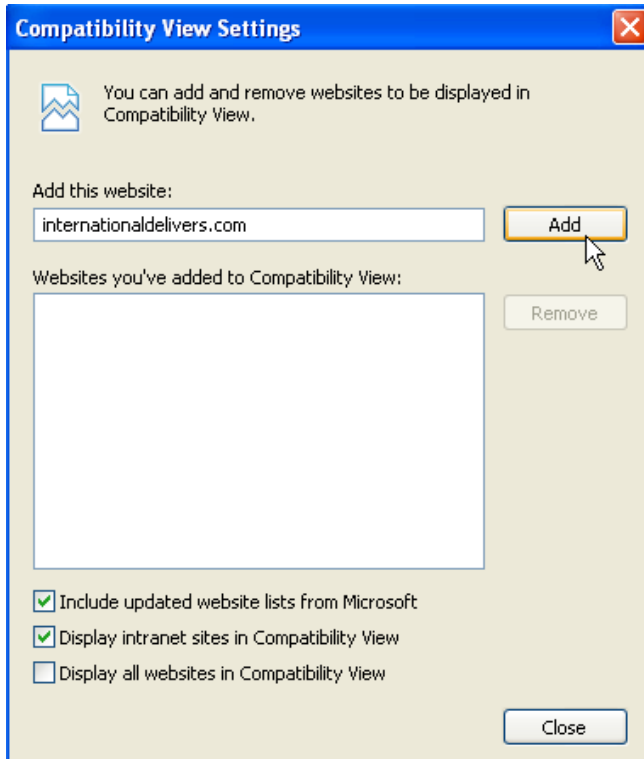


If you are running Windows 7 and Internet Explorer 9 you may be experiencing problems in Repair Management when trying to either add an operation, making a labor adjustment, making a sublet / part adjustment, adding a performance PM, adding an add-On operation and/or revising an SRT within an estimate. In order to correct these problems please perform the following steps:

1. Under the menu bar on the top of your screen under "Tools", click on "Compatibility View Settings"



2. Under “Add this website:” enter “internationaldelivers.com” and then click on the “Add” button.



3. Then check the box for “Display all websites in Compatibility View”, then click on close to return back to the Repair Management. If any problems still exist please use the “Feedback” feature. We are sorry for any inconvenience this may have caused anyone. Thank you.

